

gekko  
can be used with  
laminatE floors with  


gekko   
LaminatE Goes Wall

... fits laminatE to WALLS & CEILINGs



Wall: Canyon Century Oak

## Laminate goes wall – with gekko

Fit robust, attractive and lasting laminate planks to your walls and ceilings easily.

gekko is the installation system with which you can easily create a homely and contemporary ambience.

A wide range of decors, surfaces and formats are available from the full CLASSEN laminate programme with CLASSEN megaloc.

Whether it is a continuation of the floor decor, single stripes, a square or covering an entire area – everything is possible.

You can easily, precisely and neatly clad walls or high ceilings which you feel are unattractive with the gekko system and CLASSEN megaloc laminate planks. Give your entire room an absolutely high-quality character this way.

gekko fits laminate to walls and ceilings.

gekko

Laminate Goes Wall





gekko  
Laminate Goes Wall



## The gekko multimedia wall

Create the right setting for your high-quality LED TV. The gekko multimedia wall offers the perfect background.

Your valuable TV can be easily and neatly integrated into the gekko wall, either by being built-in or surface-mounted. All the unsightly cables simply disappear behind the gekko wall panelling.

The gekko installation system offers you every freedom of choice. The dimensions and format of the gekko multimedia wall can be adapted as required to the size of your TV and your individual requirements.



Ceiling and floor: visiogrande Indian Slate, wall: visiogrande Oil Slate



## The gekko accessory range

Complete your gekko wall with further attractive and useful details. gekko lighting rails and shelf brackets offer flexible add-on possibilities.

Extend your gekko multimedia wall for example to include a receiver, DVD-player or other in-home entertainment.

Present your souvenirs and mementos or accessories against an appealing background.

Or design attractive lighting strips with the lighting rails of the gekko ceiling installation.

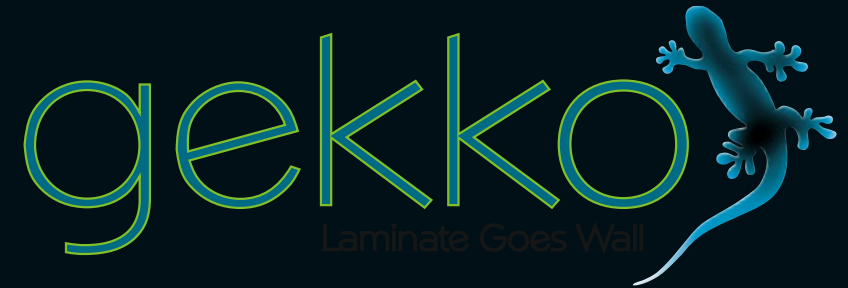
gekko brings laminate to the wall and ceiling. Boundlessly individual, right in the style of the times.

gekko  
Laminate Goes Wall



Wall: Thermo Maple Full Plank

Everything is possible ...



Wall:  
visiogrande Antique, Belgisch Granit



Floor and ceiling:  
wiparquet Pecan Nut Full Plank



Wall: visiogrande Indian Slate



Wall: visiogrande Vicenza

... whether it is a continuation of the floor decor, single stripes, a square or covering an entire area.

## System components overview

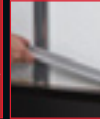
gekko is the system for easy installation from megaloc laminate panels on walls and ceiling. Comprehensive installation accessories and complete sets provide the right solution for every installation situation.

**1**



Installation profile **1**

**2**



Profile strip **2**

**3**



Installation clip **3**

**4**



Installation clip **4**

**5**



Installation clip **5**

**6**



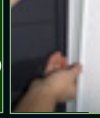
Spacing wedge **6**

**7**



Masking tape **7**

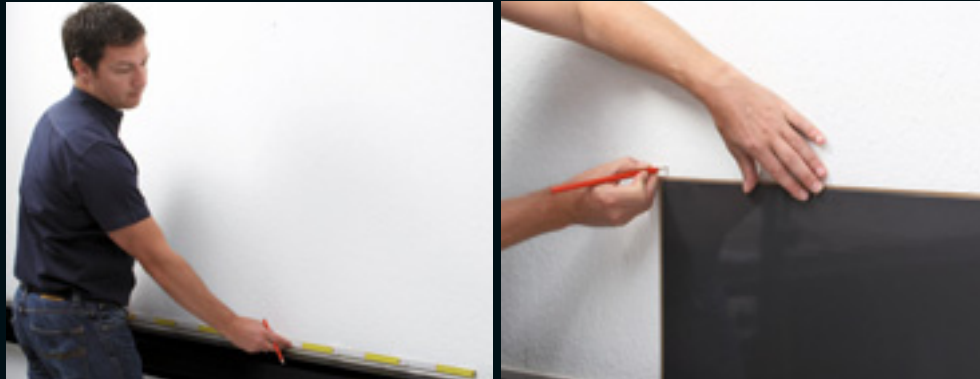
**8**



Edging profile **8**

Wall: wiparquet Canyon Maple Full Plank

# Kurzanleitung der gekko-Wandmontage



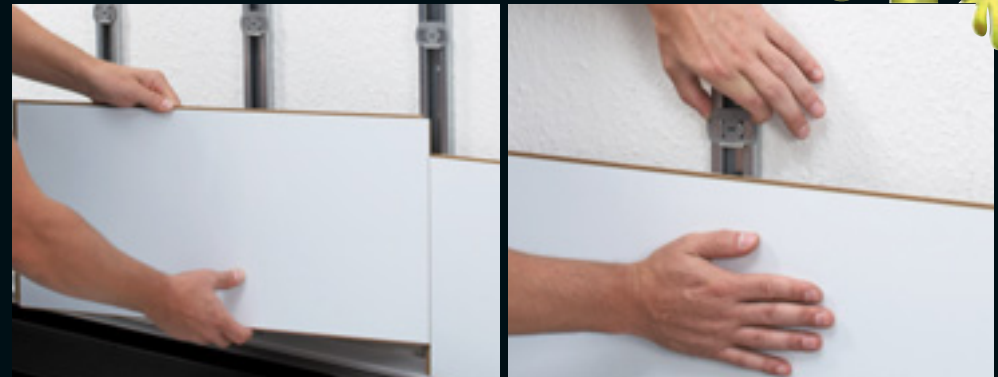
Step 1: Begin by measuring the wall width and height. Find the horizontal middle of the wall. To define the standard spacings for the gekko installation profiles, position the middle of a laminate plank at the middle of the wall and mark the left and right side edges of the laminate plank.



Step 2: Cut the installation profiles to size corresponding to the wall height (measured in Step 1) and fit them to the wall. Cut the no. 2 profile strips to size too and insert these.



Step 3: Fit a no. 3 installation clip at an angle and twist it into the horizontal position with the aid of a screwdriver. The installation clip is pushed downwards and the no. 2 profile strip secured in this way.



Step 4: Starting from the right, fit the first row of laminate planks. The following planks are positioned at a 30 degrees angle, pivoted in and pushed downwards in the connection. Each plank is locked with a no. 4 installation clip.

## Calculation tool online



Step 5: Fitting the next row is just as simple: position the laminate plank, lock it in, done. Simply feed the power and sound cables behind the wall panelling to the connection point.



Now you can see a preliminary result:  
a stepped construction with locked laminate planks.

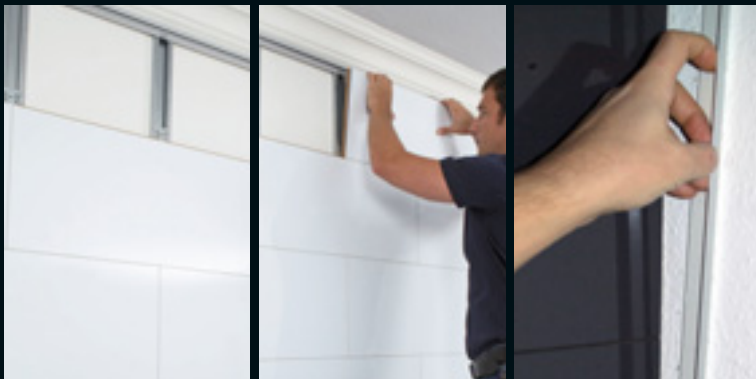


[gekko.classen.de/berechnung](http://gekko.classen.de/berechnung)

It's as easy as this:

- Type i-Nigma.mobi into your mobile phone's browser address bar to call up the site.
- i-Nigma normally recognises the correct type of mobile phone. If it doesn't, continue to follow these instructions. Download and install the application.
- Start i-Nigma and scan the code. The application will open.

We strongly recommend a mobile data tariff, because a UMTS/GSM data connection to the internet, which has to be paid for, will be established once the code has been scanned.



Step 6.1: To finish, you now have several options. Option A with shadow joint and profile strip finish: Simply secure the no. 2 profile strips turned 90 degrees with the installation crimps and keep pressing the strip a little bit further onto each newly fitted plank. For a clean finish at the sides of the shadow joint, use the no. 8 edging profile.



Step 6.2: The second option is a finish with no. 7 masking tape. The no. 5 installation clips are inserted and used to secure each new plank as done up until now. Finally, apply the masking tape.

# gekko

Laminate Goes Wall



**CLASSEN**

Classen Vertriebs GmbH  
Werner-von-Siemens-Straße 18–20  
D-56759 Kaisersesch  
Tel.: +49 (0) 2653 980-0  
Fax: +49 (0) 2653 980-299  
info@classen.de  
www.classen.de

Wall: Extravagant Leather Cognac